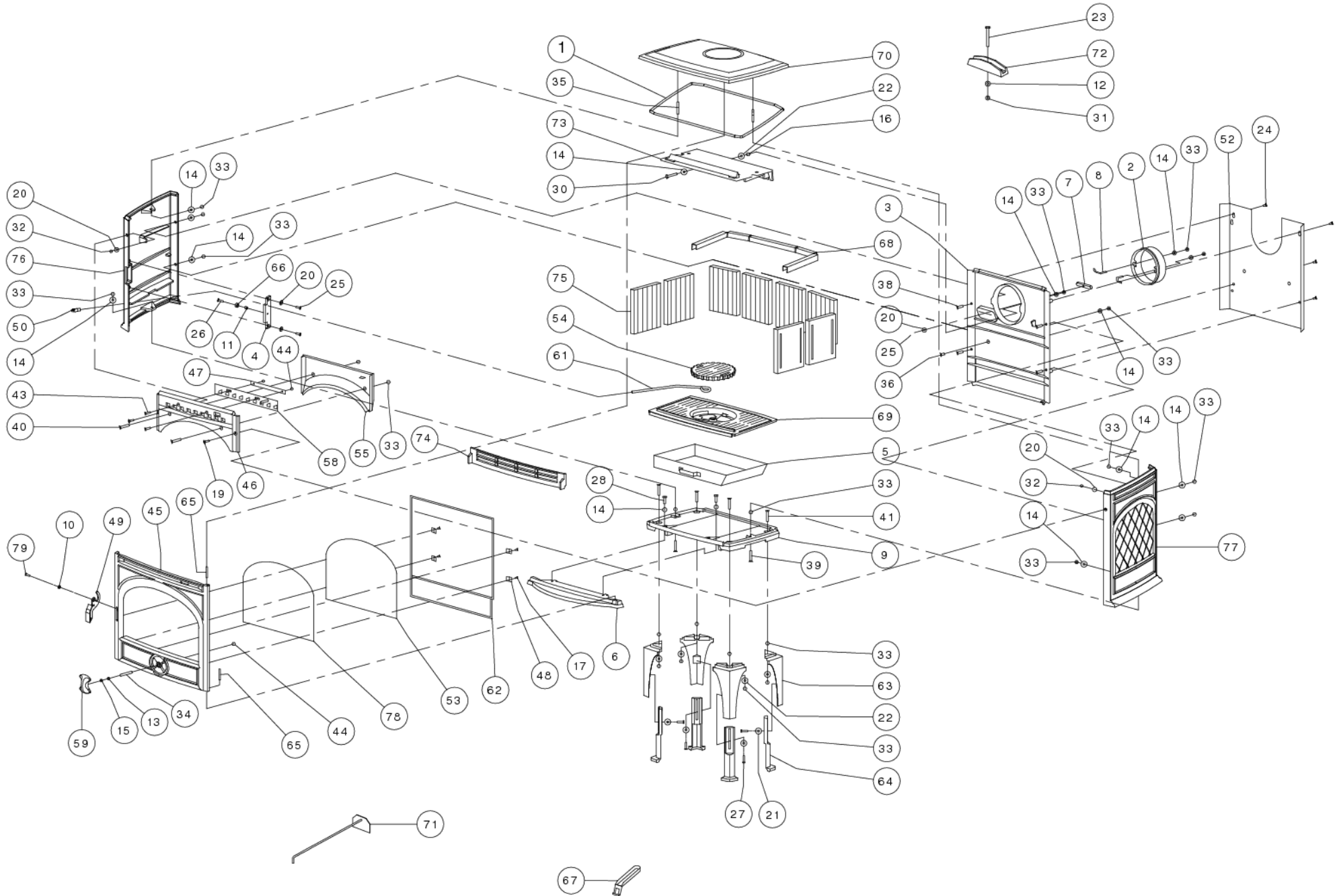




425GM



1	70.79869.000	SERVICE KIT 6.5M GLASVEZELKOORD 8MM - SK	SERVICE KIT 6.5M JOINT FIBRE CERAMIQUE 8MM - SK	SERVICE KIT 6.5M GLASS FIBER ROPE 8 MM - SK	SERVICE KIT 6.5M GLASFABER SCHNUR 8MM - SK
2	70.00341.020	00341.0 AANSLUITKRAAG Ø150 UITW.	00341.0 BUSELOT Ø150 EXTÉRIEUR	00341.0 FLUE COLLAR Ø150 OUTSIDE	00341.0 ANSCHLUSS STÜTZE Ø150 AUßERLICH
3	03.02429.020	ACHTERWAND 550CB ANTRACIET	ACHTERWAND 550CB ANTRACIET	BACK PLATE 550CB	ACHTERWAND 550CB ANTRACIET
4	03.03132.020	AFDEKPLAATJE 425CB/GM ANTRACIET	AFDEKPLAATJE 425CB/GM ANTRACIET	COVER PLATE 425CB/GM	AFDEKPLAATJE 425CB/GM ANTRACIET
5	70.05201.000	05201.0 ASLADE FOCUS, 900G	05201.0 bac a cendres focus 900g	05201.0 ach box focus 900g	05201.0 achenkasten focus 900g
6	03.05616.089	ASVANG 425CB/GM E10	ASVANG 425CB/GM E10	ASVANG 425CB/GM E10	ASVANG 425CB/GM E10
7	03.03513.020	AFDICHTPLAATJE RUG 500 KOLEN ANTRACIET	PLAQUE DE FERMETURE 500 CHARBON	SHUT	AFDICHTPLAATJE RUG 500 KOLEN ANTRACIET
8	70.07107.000	2 st BEVESTEGINGSBEUGEL KRAAG	2 p 07107.1 PIECE DE CONNECTION BUSE	2 pc07107.1 CONNECTING PIECE COLLAR	2 st 07107.1 BEFESTIGUNGSCLIP
9	03.09359.005	BODEMPLAAT 550CB	BODEMPLAAT 550CB	BODEMPLAAT 550CB	BODEMPLAAT 550CB
10	70.13641.000	10 st BUSJE MET KRAAG Ø12XØ6X5.8	10 p TUBE Ø12XØ6X5.8	10 pc BUSHING WITH COLLAR Ø12XØ6XØ5.8	10 st BUECHSE Ø12XØ6XØ5.8
11	70.13619.000	10 st BUSJE SLUITSTUK Ø10XØ6X8.5	10 p TUBE PIECE DE FERMETURE Ø10XØ6X8.5	10 pc BUSHING LATCH Ø10XØ6X8.5	10 st BÜCHSE VERSCHLUSS STÜCK Ø10XØ6X8.5
12	70.16503.000	10 st SLUITRING 10X21	10 p RONDELLE 10X21	10 pc WASHER 10X21	10 st VERSCHUSS 10X21
13	70.16501.000	10 ST D125 Ø6XØ12 SLUITRING	10 P RONDELLE D125 Ø6XØ12	10 PC WASHER D125 Ø6XØ12	10 ST D125 Ø6XØ12 UNTERLEGSCHIEBE
14	70.16502.000	10 ST D125 Ø8XØ17 SLUITRING - 16502.0	10 PC RONDELLE Ø8XØ17 - 16502.0	10 PC WASHER D125 Ø8XØ17 - 16502.0	10 ST D125 Ø8XØ17 UNTERLEGSCHIEBE - 16502.0
15	70.16601.000	10 ST Ø6 VEERRING GEWELFD	10 p RONDELLE DIN 137B Ø6	10 pc SPRING WASHER DIN 137B Ø6	10 st FEDERSCHIEBE DIN 137B Ø6
16	70.17102.000	10 st D439 M8 LAGE ZESKANTMOER - 17102.0	10 p ECROU DIN 439 M8 - 17102.0	10 pc NUT DIN 439 M8 - 17102.0	10 st MUTTER DIN439 M8 - 17102.0
17	03.18101.041	D7516D M5 *NT GEBRUIKEN* NU 03.19801.041	VIS DIN 7516D M5x10	SCREW DIN 7516D M5x10	SCHRAUBE DIN 7516D M5x10
19	70.18602.041	10 st D7991 M6X20 VERZ.SCHR.BIZK GEZW VOLDR	10 p VIS DIN 7991 M6x20 NOIR	10 pc SCREW DIN 7991 M6x20 BLACK	10 st SCREW DIN 7991 M6x20 BLACK
20	70.18701.000	10 st D9021A Ø6XØ18 SLUITRING	10 P RONDELLE DIN 9021A Ø6	10 PC WASHER DIN 9021A Ø6XØ18	10 st UNTERLEGSCHIEBE DIN 9021A Ø6XØ18
22	70.18710.000	10 st SLUITRING 8X25	10 p Ø8xØ25 RONDELLE	10 pc WASHER 8X25	10 st VERSCHUSS 8X25
23	70.19328.000	10 st ZESKANT TAPBOUT M10X75	10 p VIS DIN 933 M10X75	10 pc SCREW DIN 933 M10X75	10 st SCHRAUBE DIN 933 M10X75
24	70.19302.000	10 st ZESKANTTAPBOUT D933 M6X10	10 p BOULON DIN 933 M6x10	10 pc BOLT DIN 933 M6x10	10 st BOLZEN DIN 933 M6x10
25	70.19304.000	10 st D933 M6X16 ZESKANTTAPBOUT	10 p BOULON DIN 933 M6x16	10 pc BOLT DIN 933 M6x16	10 st BOLZEN DIN 933 M6x16
26	70.19305.000	10 st D933 M6X20 ZESKANTTAPBOUT	10 p BOULON DIN 933 M6x20	10 pc BOLT DIN 933 M6x20	10 st BOLZEN DIN 933 M6x20
27	70.19306.000	10 ST M6X25 ZESKANTTAPBOUT	10 p BOULON DIN 933 M6x25	10 pc BOLT DIN 933 M6x25	10 st BOLZEN DIN 933 M6x25
28	70.19311.000	10 st D933 M8X16 ZESKANTTAPBOUT	10 p BOULON DIN 933 M8x16	10 pc BOLT DIN 933 M8x16	10 st BOLT DIN 933 M8x16
30	70.19316.000	10 st ZESKANT TAPBOUT M8X40	10 p BOULON DIN 933 M8X40	10 pc BOLT DIN 933 M8x40	10 st BOLZEN DIN 933 M8x40
31	70.19406.000	10 st ZESKANT MOER M10	10 p D934 M10 ECROU	10 pc NUT DIN 934 M10	10 st D934 M10 MUTTER
32	70.19410.000	10 st D934 M6 ZESKANTMOEREN	10 p ECROU DIN 934 M6	10 pc NUT DIN 934 M6	10 st MUTTER DIN 934 M6
33	70.19401.000	10 ST D934 M8 ZESKANTMOER 19401.0	10 P ECROU DIN 934 M8 19401.0	10 PC NUT DIN 934 M8 19401.0	10 ST MUTTER DIN 934 M8 19401.0
34	70.19502.000	10 st D939 M6X20 TAPEINDEN	10 p GOUJON DIN 939 M6x20	10 pc STUD DIN 939 M6x20	10 st STIFTSCHRAUBE DIN 939 M6x20
35	70.19511.000	10 st D939 M8X50 TAPEIND	10 p GOUJON DIN 939 M8x50	10 pc STUD DIN 939 M8x50	10 st STIFTSCHRAUBE DIN 939 M8x50
36	03.19731.000	D963 M8X16 PLATV.SCHR.ZGS *	VIS DIN 963 M8x16	SCREW DIN 963 M8x16	SCHRAUBE DIN 963 M8x16
38	70.19701.000	10 st SCHROEF M8X25	10 p VIS M8X25	10 pc SCREW M8X25	10 st SCHRAUBE M8X25
39	70.19734.000	10 st D963 M8X35 PLATV.SCHR.ZGS#	10 p VIS DIN 963 M8x35	10 pc SCREW DIN 963 M8x35	10 st SCHRAUBE DIN 963 M8x35
40	70.19735.000	10 ST D963 M8X40 PLATV.SCHR.ZGS	10 p VIS M8X40	10 pc SCREW M8X40	10 st SCHRAUBE DIN 963 M8x20
41	03.19739.000	D963 M8X45 PLATV.SCHR.ZGS *	VIS DIN 963 M8X45	SCREW DIN 963 M8X45	SCHRAUBE DIN 963 M8X45
43	70.20803.000	10 st D966 M6X20 BOLVERZ KK SCHROEF	10 p DIN 966 M6X20 VIS A METAUX	10 pc DIN 966 M6X20 SREW	10 st DIN 966 M6X20 SCHRAUBEN
44	70.20001.000	10 st ZELFB.MOER CLEVELOCK	10 p M6 ECROU CLEVELOCK	10 pc LOCKING NUT DIN 980 M6	10 st SICHERUNGSMUTTER DIN 980 M6
45	03.15821.389	DEUR 425CB/BM E10	DEUR 425CB/BM E10	DEUR 425CB/BM E10	DEUR 425CB/BM E10
46	03.24371.020	FRONT 550CB	FACADE 550CB	FRONT 550CB	FRONT 550CB ANTRACIET
47	03.25304.000	GELEID.STRIP 550CB LUCHTSCHUIF	PIECE DE GUIDAGE	GUIDE PLATE DRAUGHT CONTROL	GELEID.STRIP 550CB LUCHTSCHUIF
48	70.26101.041	4ST SET GLASBEV; 20X20MM	4PC SET FIXATION VITRE 20X20	4PC SET GLASS RETAINER 20X20	4ST SET GLAS BEHÄLTER 20X20
49	72.27017.000	GRENDEL 250	POIGNEE 250	HANDLE 250	VERRIEGELUNG 250
50	70.33043.043	KNOP SCHUDSTANG 250	BOUTON TIGE DE DECENDRAGE 250	KNOB RIDDLING ROD 250	KNOPF RÜTTELSTANGE 250
52	03.28010.020	HITTESCHILD RUG 500 (VERF)	PLAQUE DE PROTECTION DOS 500	HEATSHIELD	HITTESCHILD RUG 500 (VERF)

53	70.26063.000	26063.0 GLAS 550CB 410X291X4 R	26063.0 VITRE CERAMIQUE 550CB	26063.0 CERAMIC GLASS 550CB	26063.0 GLAS 550CB
54	70.61111.000	61111.0 SCHUDROOSTER 250	61111.0 GRILLE DE DECENDRAGE 250	61111.0 RIDDLING GRATE 250	61111.0 RÜTTELROST 250
58	02.37949.143	LUCHTSCHUIF BOVEN 550CB NIKKEL	LUCHTSCHUIF BOVEN 550CB NIKKEL	AIR CONTROL TOP 550CB	LUCHTSCHUIF BOVEN 550CB NIKKEL
59	70.37968.089	LUCHTSCHUIF ONDER 250/E10	REGLETTE D'AIR DESSOUS 250/E10	DRAFT CONTROL UNDER 250/E10	LUFT SCHIEBER UNTER 250/E10
61	70.61310.000	61310.1 SCHUDSTANG 425GM	61310.1 TIGE DE DECENDRAGE 425GM	61310.1 RIDDLING ROD 425GM	61310.1 RÜTTELSTANGE 425GM
62	70.79922.000	Z422 : GLASVEZELKOORD 10 MM KOORD-10	S422 : JOINT FIBRE CERAMIQUE 10 MM KOORD-10	B422 : GLASS FIBER ROPE 10 MM KOORD-10	S422 : GLASFASER SCHNUR 10 MM KOORD-10
63	70.52219.089	POOT BOVEN 550CB/E10	PIED HAUT 550CB/E10	LEG UPPER 550CB/E10	FUSS OBEN 550CB/E10
64	70.52220.089	POOT ONDER 550CB/E10	PIED DESSOUS 550CB/E10	LEG UNDER 550CB/E10	FUSS UNTER 550CB/E10
65	70.58610.000	10 st SCHARNIERPEN Ø6X45	10 pc PIVOT AVEC TETE Ø6X45	10 pc CLEVIS PIN Ø6X45	10 st GEWINDESTIFT OHNE KOPF
66	70.13617.000	SET SLUITING 750/10 SERIE/20 SERIE	SET FERMETURE	SET LOCKING	SET VERSCHUSS
67	70.27226.020	SLT5-/01 KOUDE HAND ASBAK	SLT5-/01 MAIN FROIDE BAC A CENDRES3	SLT5-/01 COLD HAND ASHPAN	SLT5-/01 KALTE HAND ASCHENKASTE
68	70.28866.000	LAMELHOUDER 425GM	SUPPORT PLAQUE INTERIEURE 425GM	SUPPORT INNER PLATE 425GM	LAMELLEBEHÄLTER 425GM
69	70.56316.000	56316.2 ROOSTERSTEUN 425GM	56316.2 SUPPORT DE GRILLE 425GM	56316.2 GRATE SUPPORT 425GM	56316.2 ROSTSTÜTZE 425GM
70	03.69161.589	TOPPLAAT 425CB/GM E10	TOPPLAAT 425CB/GM E10	TOPPLAAT 425CB/GM E10	TOPPLAAT 425CB/GM E10
71	70.59209.000	TREKSCHEPJE 600	RACLOIR 600	SCRAPER 600	SCHÜREISEN 600
72	03.72301.000	U-STUK (DEKSELTREKKER)	U-PIÈCE TIROIR DE COUVERCLE	U-PIECE (COVER)	U-STÜCK (DECKELZIEHER)
73	70.76104.001	76104.0 VLAMPLAAT 500GM	76104.0 DEFLECTEUR 500GM	76104.0 BAFFLE PLATE 500GM	76104.0 FLAMLEITPLATTE 500GM
74	70.77055.020	77050.0 vuurkorf 425 gm	77050.0 garde-buches 425gm	77050.0 LOG RETAINER 425GM	77050.0 stehorst 425gm
75	70.35202.000	LAMEL 450 35202.0	LAMELLE 450 35202.0	LAMELLA 450 35202.0	LAMELLE 450 35202.0
76	03.79562.106	ZIJWAND L 425CB/GM MET SCHUDSTANG	ZIJWAND L 425CB/GM MET SCHUDSTANG	ZIJWAND L 425CB/GM MET SCHUDSTANG	ZIJWAND L 425CB/GM MET SCHUDSTANG
77	03.79563.189	ZIJWAND R 425CB/GM E10	ZIJWAND R 425CB/GM E10	ZIJWAND R 425CB/GM E10	ZIJWAND R 425CB/GM E10
78	70.79870.000	SERVICE KIT 4.0M GLASVEZELKOORD 6MM - TU.SK6	SERVICE KIT 4.0M JOINT FIBRE CERAMIQUE 6MM - SK6	SERVICE KIT 4.0M GLASS FIBER ROPE 6MM -TU.SK6	SERVICE KIT 4.0M GLASFASER SCHNUR 6MM - TU.SK6
79	70.20360.000	10 st D7984 M6X16 LAGE CIL.KOP BIN.ZESK	10 p D7984 M6X16 BAS CIL.KOP BIN.ZESK	10 pc SCREW M6X16 D7984	10 st D7984 M6X16 LAGE CIL.KOP BIN.ZESK